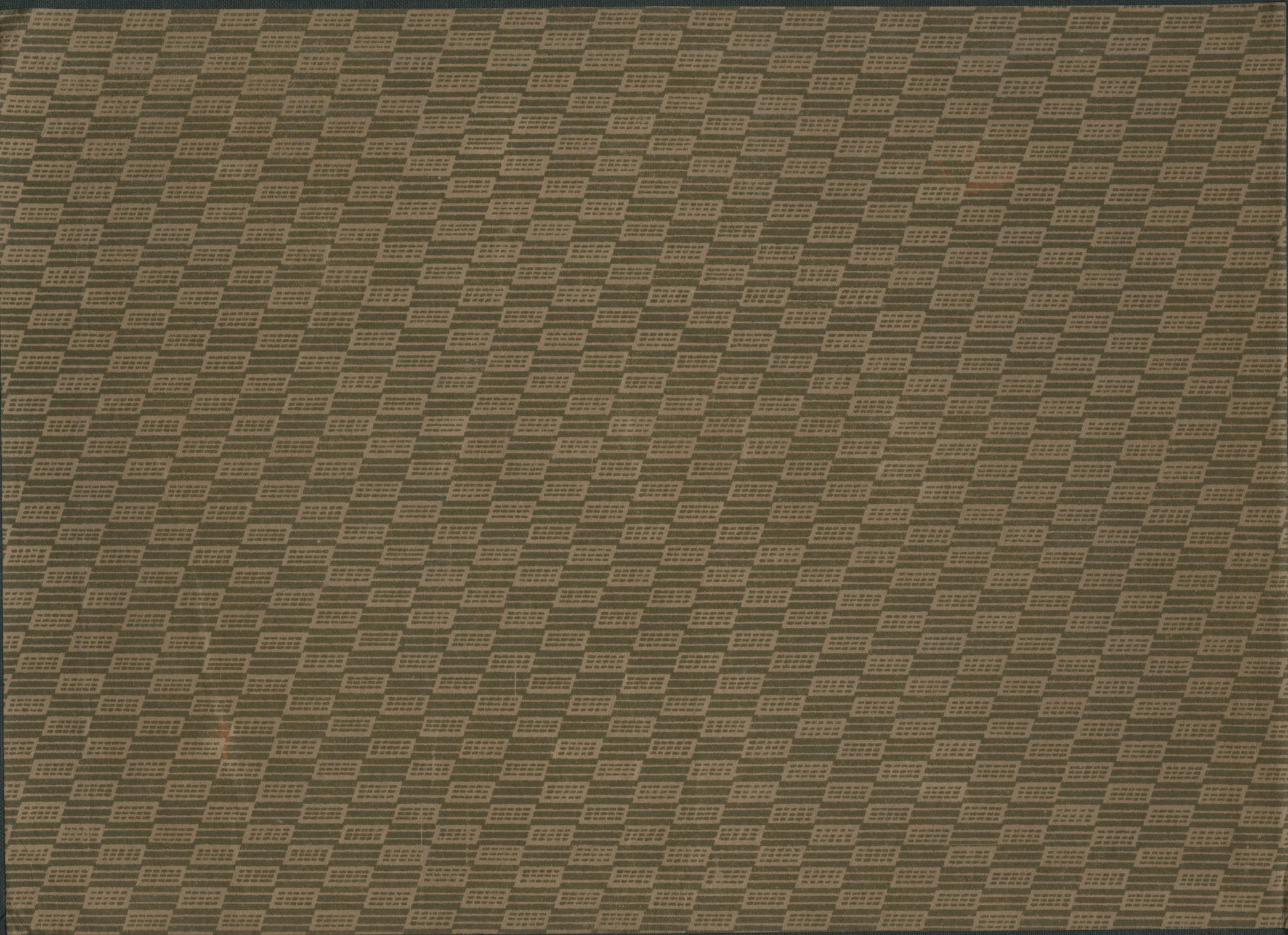






















Apr. 20th



Belichtungs-Tafel

Belichtungszeiten für Panatomic-Film $17/10^0$ DIN	$f : 6,3$	$f : 8$ bzw. $7,7$	$f : 11$	$f : 16$	$f : 22$		
Schnee und Wasser . . .			$1/125$	$1/100$	$1/50$	$1/25$	
		$1/125$	$1/100$	$1/50$	$1/25$	$1/10$	
Helle Straßen und Plätze . . .		$1/100$	$1/50$	$1/25$	$1/10$	$1/5$	
		$1/50$	$1/25$	$1/10$	$1/5$	$1/2$	
Dunkle Straßen und Plätze . . .		$1/50$	$1/25$	$1/10$	$1/5$	$1/2$	
		$1/25$	$1/10$	$1/5$	$1/2$	1	
Landschaft mit hellem Vorder- grund		$1/100$	$1/50$	$1/25$	$1/10$	$1/5$	
		$1/50$	$1/25$	$1/10$	$1/5$	$1/2$	
Landschaft mit dunklem Vorder- grund		$1/50$	$1/25$	$1/10$	$1/5$	$1/2$	
		$1/25$	$1/10$	$1/5$	$1/2$	1	
Personen, Grup- pen im Freien .		$1/50$	$1/25$	$1/10$	$1/5$	$1/2$	
		$1/25$	$1/10$	$1/5$	$1/2$	1	
Personen, Gruppen unter Bäumen		$1/10$	$1/5$	$1/2$	1	2	
		$1/5$	$1/2$	1	2	4	
Personen in hellem Zimmer .		$1/5$	$1/2$	1	2	4	
		$1/2$	1	2	4	8	
Personen in dunklem Zimmer		$1/2$	1	2	4	8	
		1	2	4	8	16	
 mit Sonne	 ohne Sonne	Diese Belichtungstafel gilt für Mai bis August von 10 bis 16 Uhr. In den Wintermonaten: doppelte Belichtungszeit.					

Angaben für „Panatomic“-Film ($17/10^0$ DIN). Bei je $3/10^0$ DIN mehr — halbe Belichtungszeit; bei je $3/10^0$ DIN weniger — doppelte Belichtungszeit.

Tiefenschärfen - Tafel

$$f = 10,5 \text{ cm}$$

Einstell- Entfernung	B L E N D E									
	6,3		8 bzw. 7,7		11		16		22	
	Schärfe		Schärfe		Schärfe		Schärfe		Schärfe	
	von	bis	von	bis	von	bis	von	bis	von	bis
∞	20.0	∞	14.0	∞	10.0	∞	7.0	∞	5.0	∞
15 m	8.60	60.0	7.25	∞	6.00	∞	4.80	∞	3.90	∞
8 m	5.70	13.30	5.10	18.60	4.50	40.0	3.70	∞	3.10	∞
6 m	4.62	8.60	4.20	10.50	3.75	15.0	3.20	38.0	2.70	∞
4 m	3.33	5.00	3.10	5.60	2.86	6.70	2.55	9.30	2.20	20.0
3 m	2.61	3.53	2.47	3.82	2.30	4.30	2.10	5.25	1.88	7.50
2,5 m	2.22	2.86	2.12	3.05	2.00	3.33	1.84	3.90	1.67	5.00
2 m	1.82	2.22	1.75	2.33	1.67	2.50	1.56	2.80	1.43	3.33
1,7 m	1.57	1.86	1.52	1.93	1.42	2.10	1.37	2.25	1.27	2.58
1,5 m	1.40	1.62	1.35	1.68	1.30	1.77	1.23	1.91	1.15	2.15

Die in der Tafel aufgeführten Entfernungen, also sowohl die Einstellentfernungen wie die Erstreckungsbereiche der Tiefenschärfe nach vorne und nach hinten, sind sämtlich vom Objektiv aus bemessen. Dabei sind diese Entfernungen alle in Metern ausgedrückt.



























































































University

















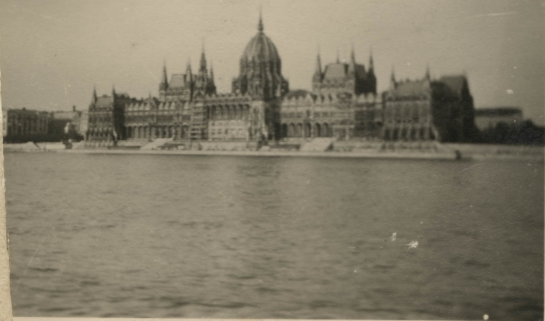








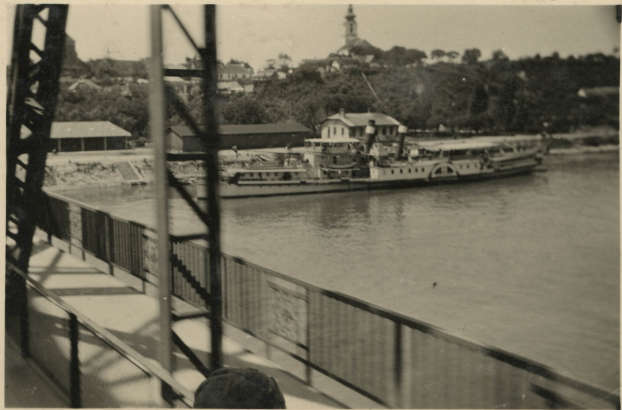












































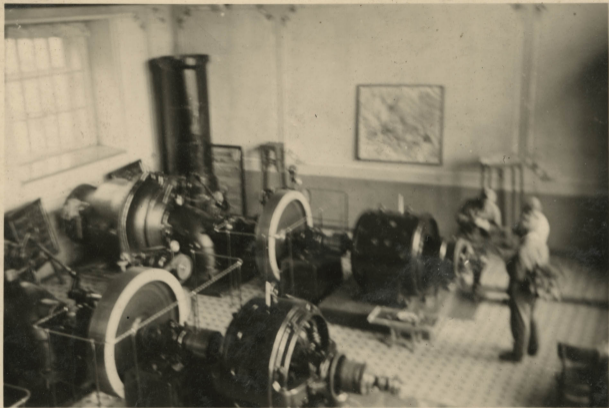




40

















































































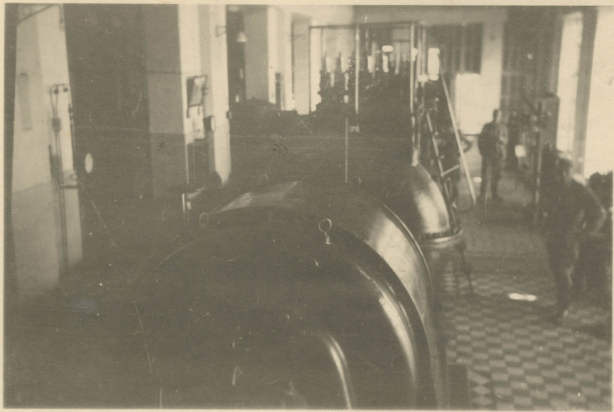




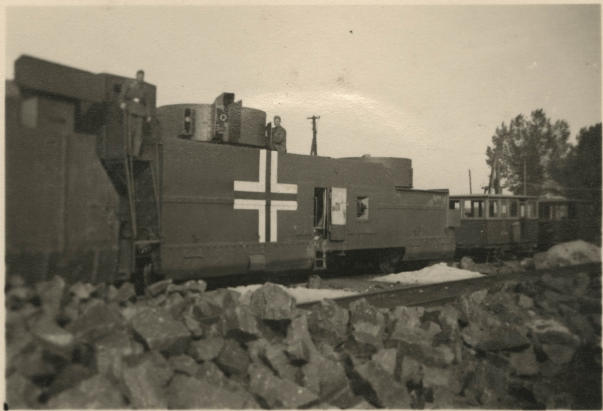














































































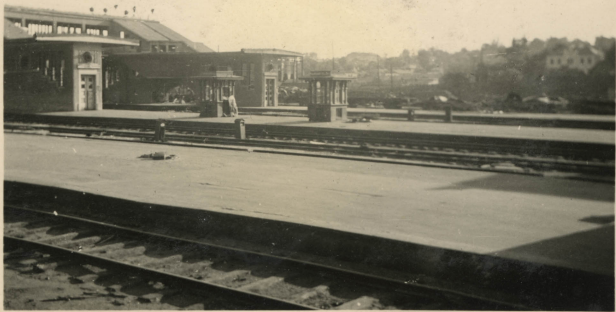






















































































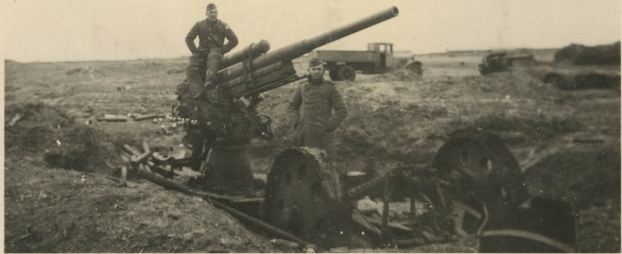














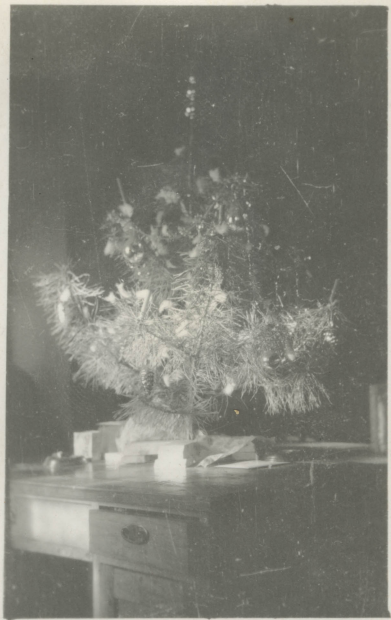


















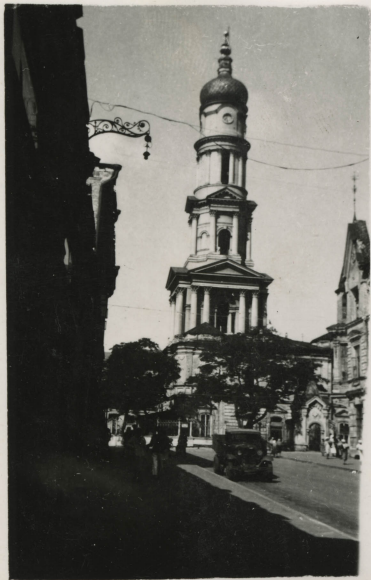
































194































































